



See digital 3D model here: <https://skfb.ly/>

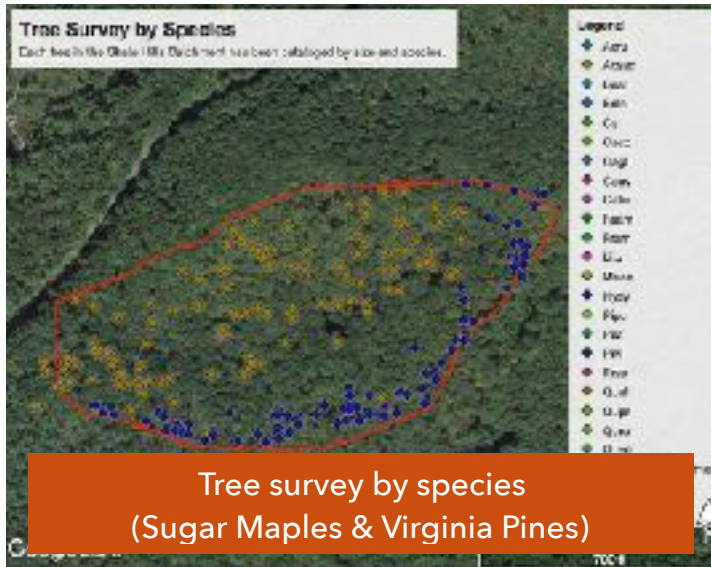
Explore Virtual Fieldwork Environments (VFEs) in ways that support classroom use. Special attention will be given to the Ancient Denvers and Shale Hills VFEs as we work to create a VFE of the Penn Dixie Fossil Park & Nature Reserve. Practice skills and use tools and resources that support the development and use of your own VFEs. Work with Don Duggan-Haas and Rob Ross from the Paleontological Research Institution in crafting a VFE in your region while learning approaches and technologies for creating your own with your students. This will be limited to 20 participants.
 See: <http://virtualfieldwork.org/CZO-VFE-Intro.html>



Make models of your (or any) landscape!

Using and Making Virtual Fieldwork Experience (VFEs)

WNY Master Teacher Professional Development Programming



WNY Program Dates:
 Session 1: Online September 14th; 4:30 - 6:00 pm
 (all online sessions will be recorded)
 Session 2: Face-to-Face September 23rd
 Session 3: Online October 11th; 4:30 - 6:00 pm
 Session 4: Online January 23rd; 4:30 - 6:00 pm
 Session 5: Face-to-Face April 14th

Tentative Agenda: <http://bit.ly/PennDixieVFE>

Questions? Email Don Duggan-Haas:
dad55@cornell.edu.